

Liam Kelley

Suspended Connections	1 - 5
Arboreum	6 - 9
Chair 55	10 - 12
Sunnyside Agricultural Center	13 - 16

Suspended Connections

1955 Julian Ave. San Diego, CA 92113, United States

Residential - Studio - Retail - Gallery Space

January - June 2024

Partner: Natasha Lam

Suspended Connections is a community with a new approach to the traditional interaction between artists and the public. Differing levels of transparency on all facades allow for a glimpse inside the process behind final work while promoting a sense of collaboration between neighboring artists. This idea stems from the sense of inspiration found inside an architecture studio, with the work of our peers always being visible to learn from one another. It became apparent that in building an addition to the existing Bread and Salt Gallery in San Diego, CA an approachable and intriguing environment was necessary.

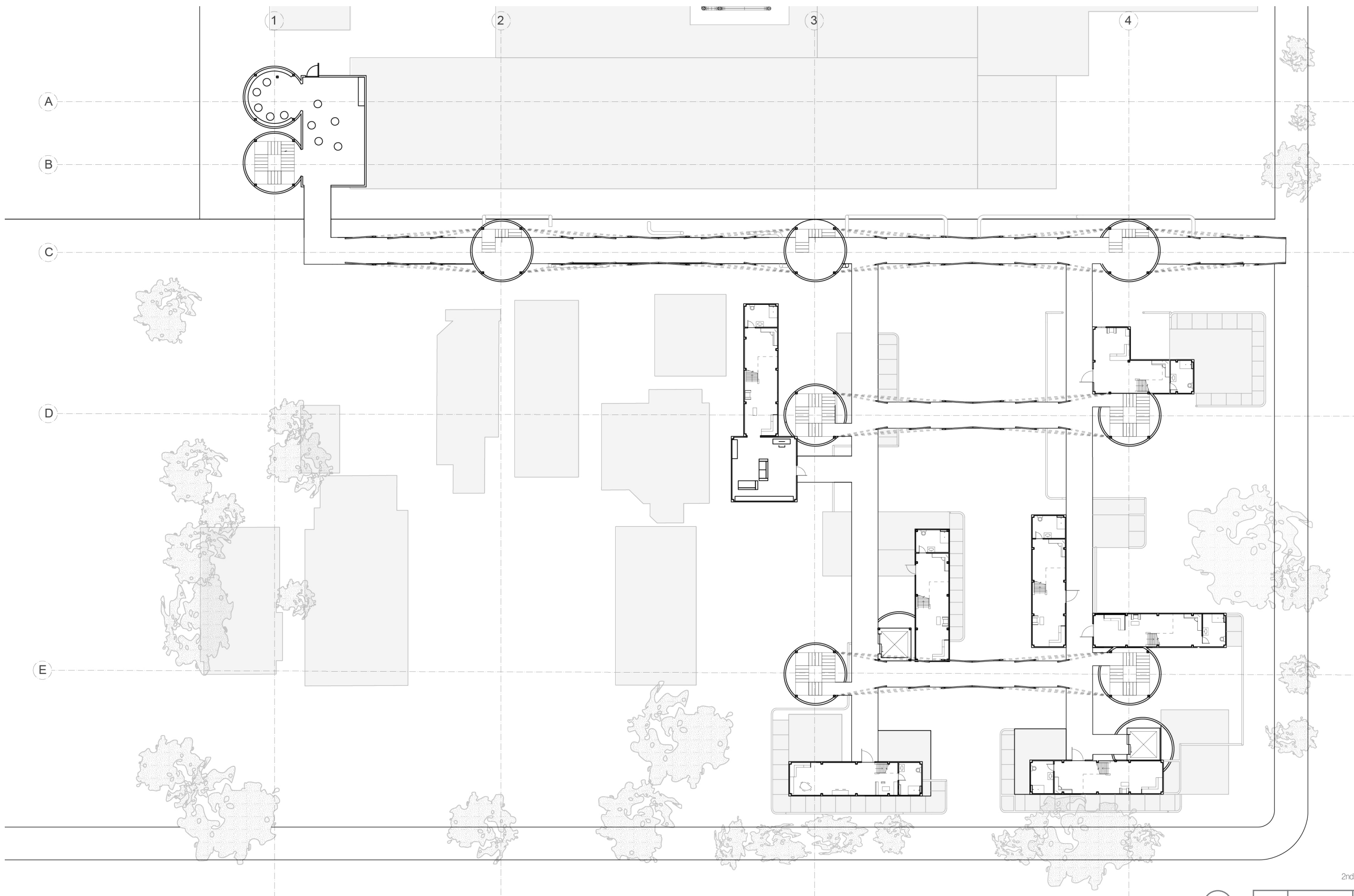
The expansion offers a community space for artists to reside, work, and display projects while collaborating with others. Each artist's unit is made up of three modules. On the ground floor there is direct access to the first two programs: studio and retail spaces. The second floor is comprised of the living spaces. These living spaces are connected via a series of catwalks which are suspended between large cylindrical towers, serving as points of vertical circulation.

Each unit has a unique footprint on the ground floor, promoting exploration between neighboring studio and retail spaces. Quite literally, the creation and distribution of art is what supports the artist's living space above. Lastly, a continuous structural member weaves it's way throughout the site. Sometimes it serves as a vertical support, sometimes it wraps around a structure for solar shading, and sometimes it meets at the ground to direct circulation in specific areas.

Ultimately, Suspended Connections is a new way to interpret a museum and communal space offering the artists in residence and the community a unique experience.

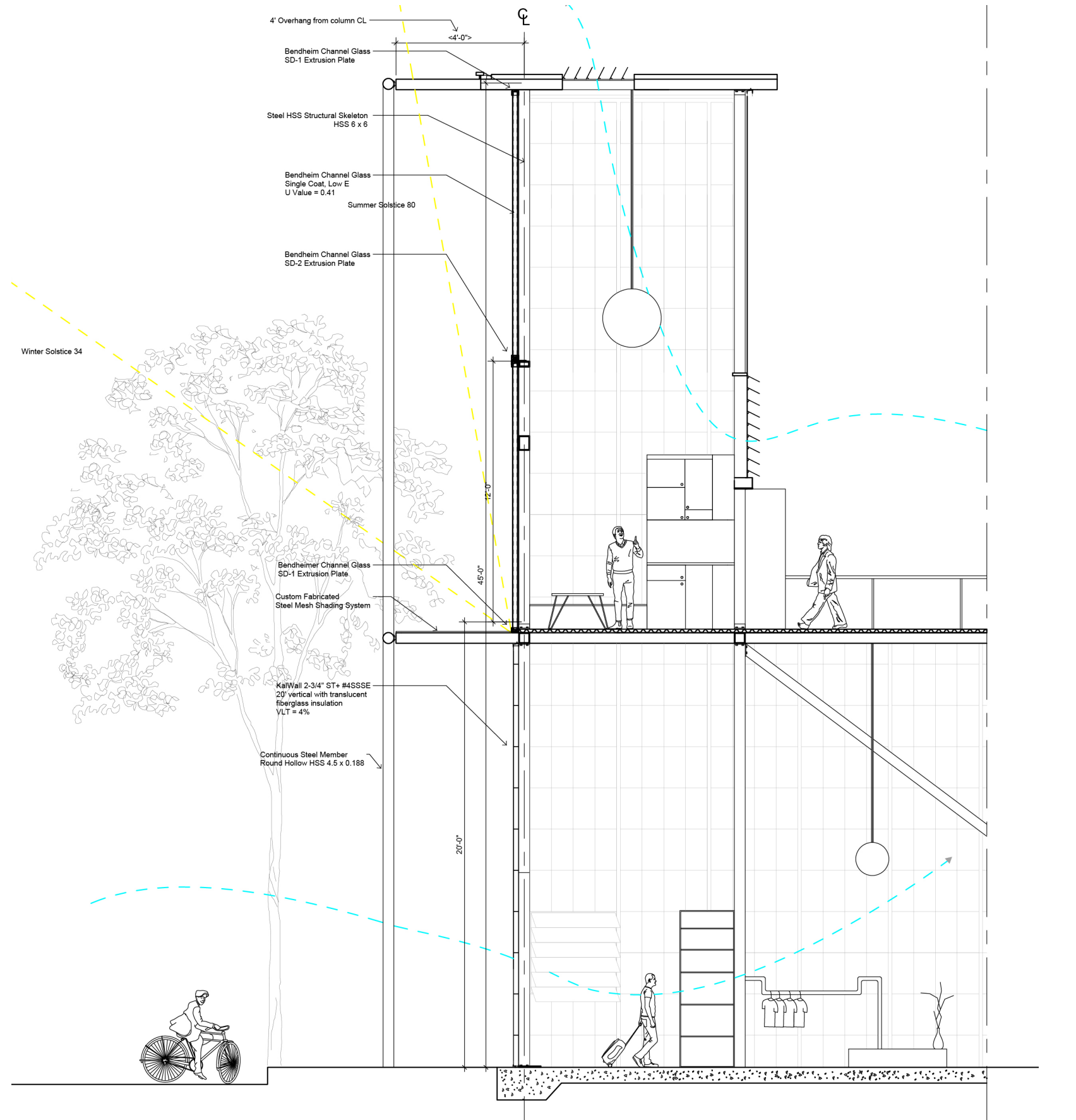
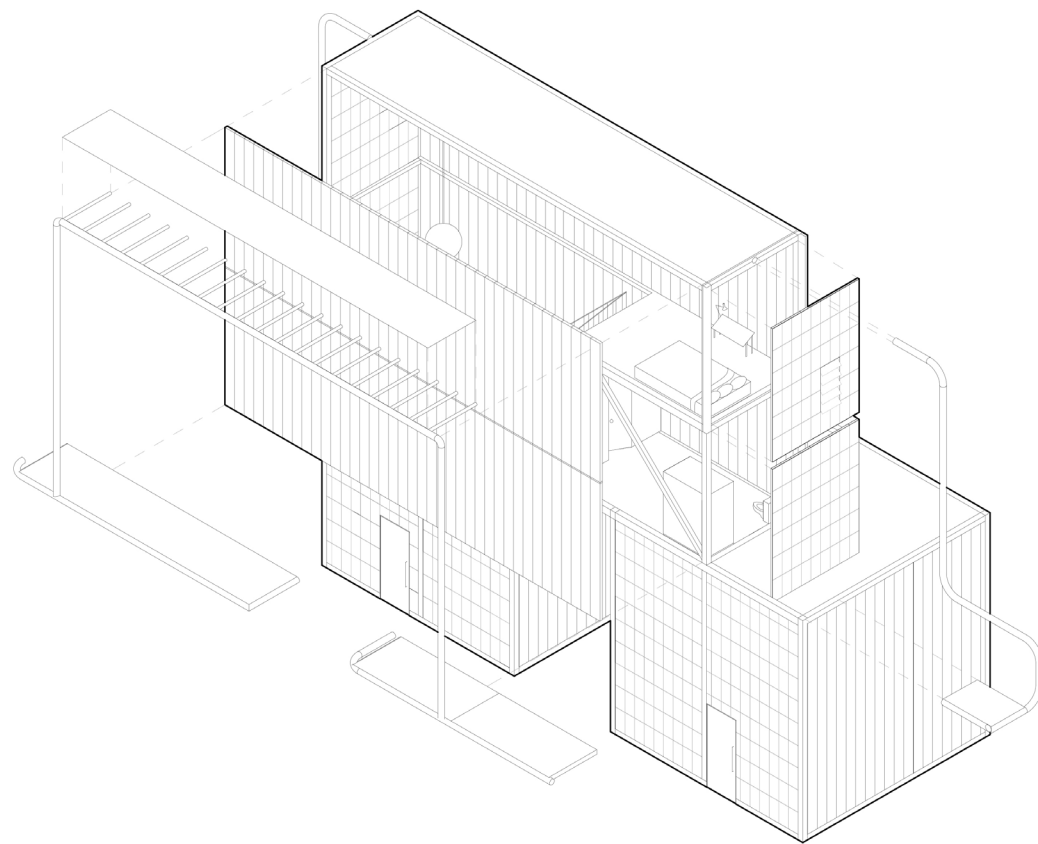
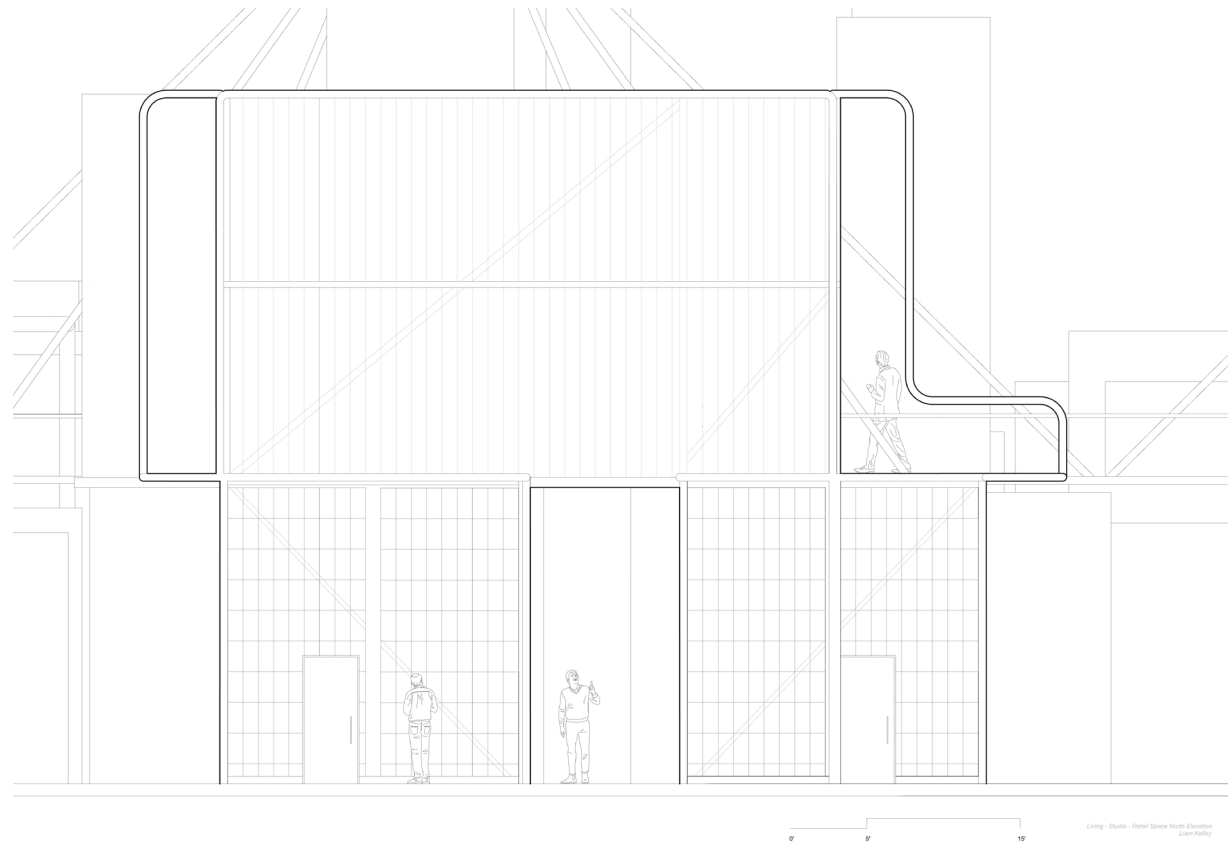






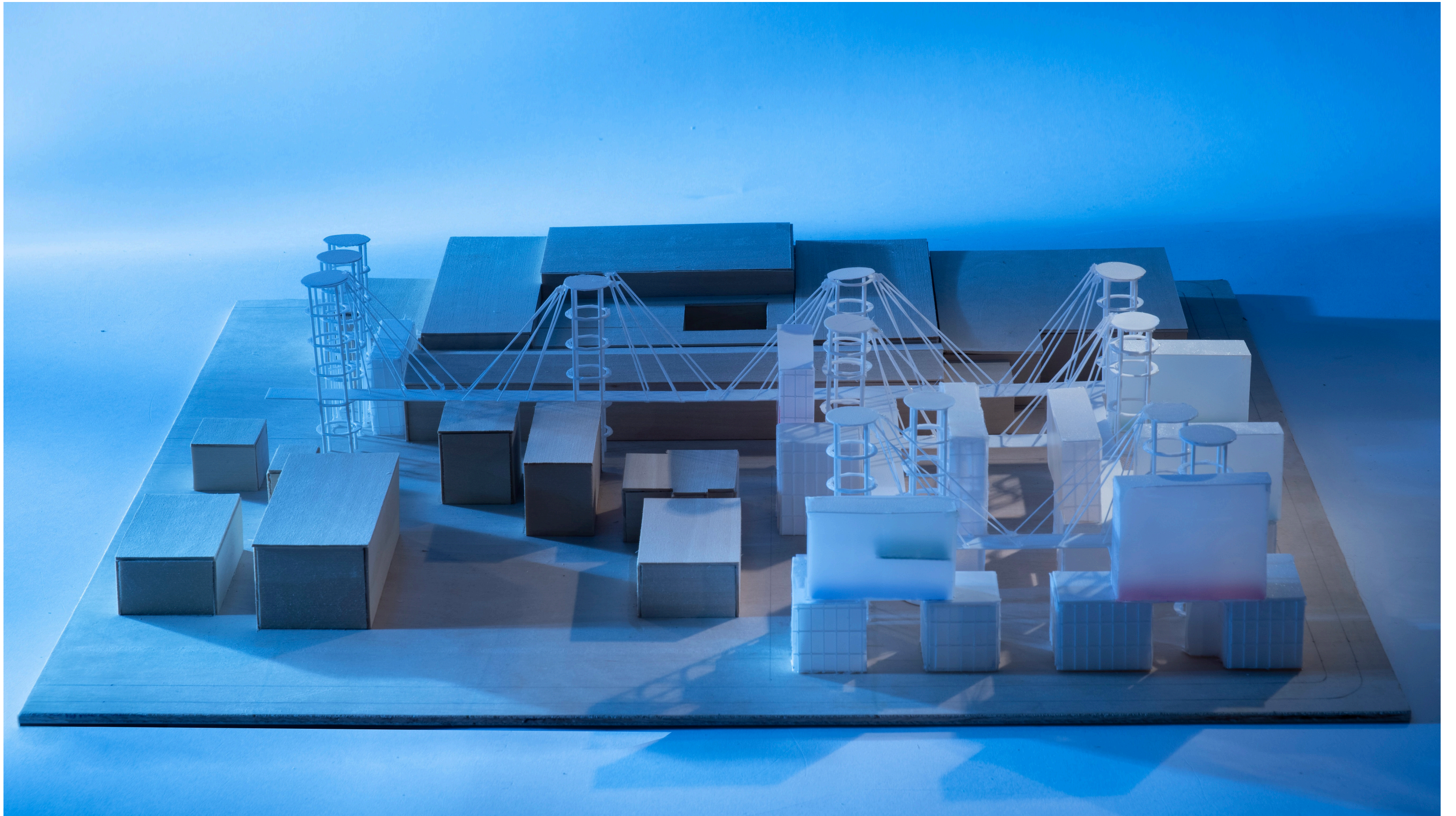
2nd floor residential units plan





Residential and Retail Section





Arboreum

Loggia del Pesce, Florence, Italy
September - December, 2024

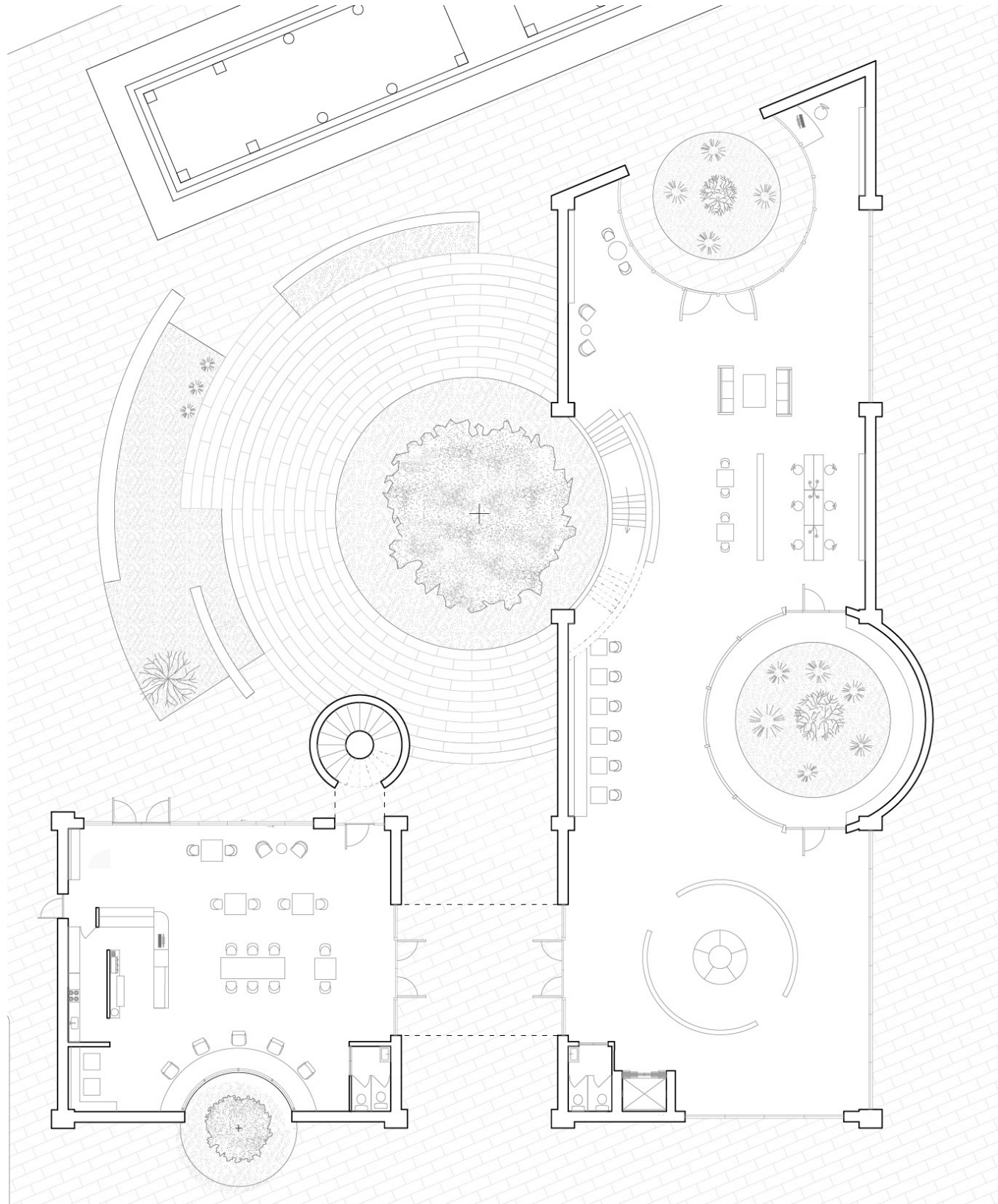
Partners: Demiana Alfred & Namita Mantri

The Loggia del Pesce is a very significant piece of Florentine Architecture for its purpose and also for its designer. Giorgio Vasari designed this covered area as a place for a fish market in 1569. However, during a period of urban renovation from 1885 to 1895 the loggia was deconstructed and moved to a museum. When it was brought back to life in 1956, it was rebuilt and repurposed in Piazza Dei Ciompi as a shaded area for the piazza.

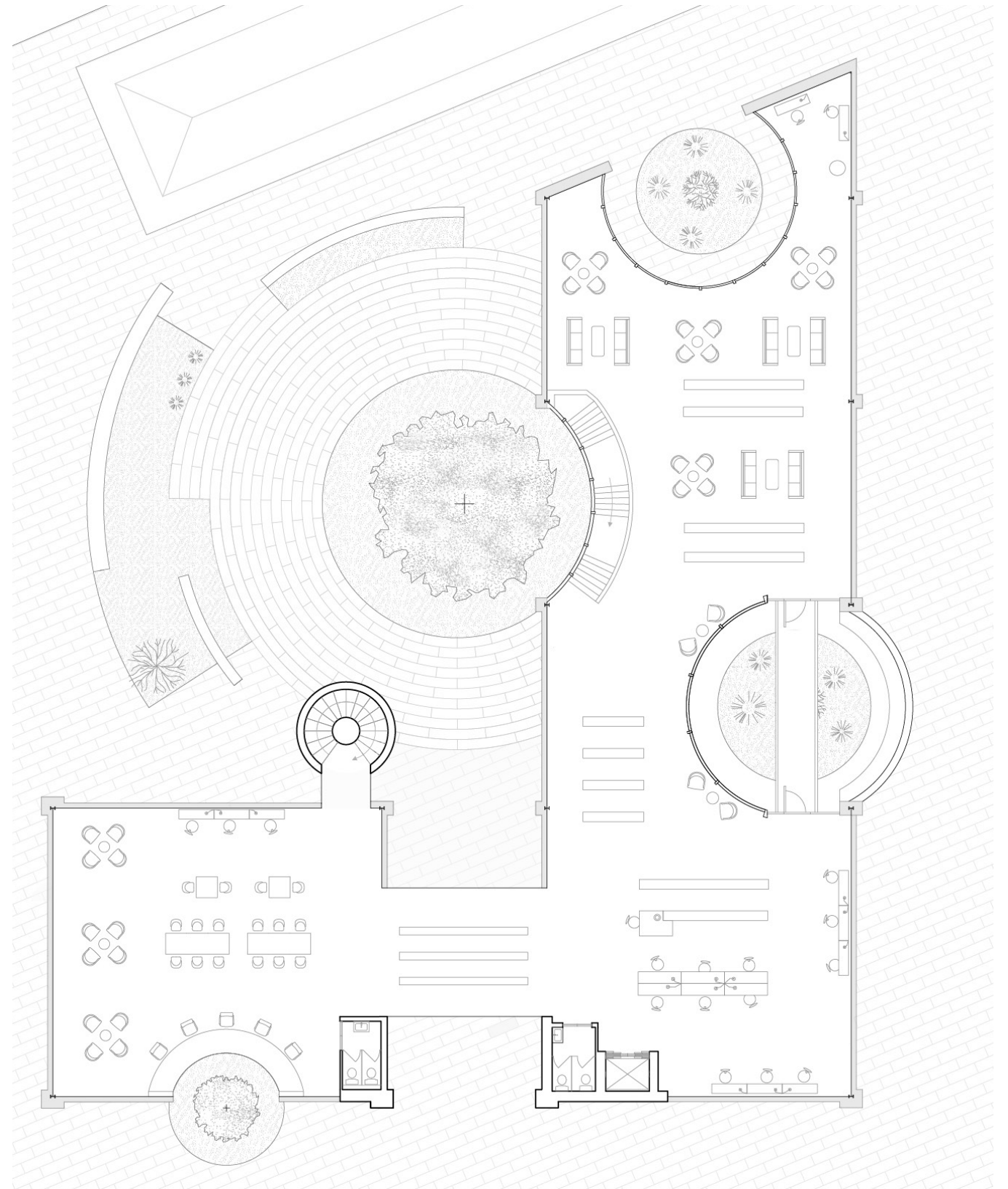
Arboreum is a proposal for an improved piazza in this location featuring a library, cafe, mixed-use space, as well as a kindergarten. A decision was made to emphasize access to plant life in an urban context as well as to respect historical architecture while thinking forward.

This design utilizes modern materials and structural elements in a familiar way. The Loggia serves as an entrance from the busy Via Pietrapiana into the core of the site where community programs are focused. In turn, the kindergarten is sheltered on the southernmost part of the site.



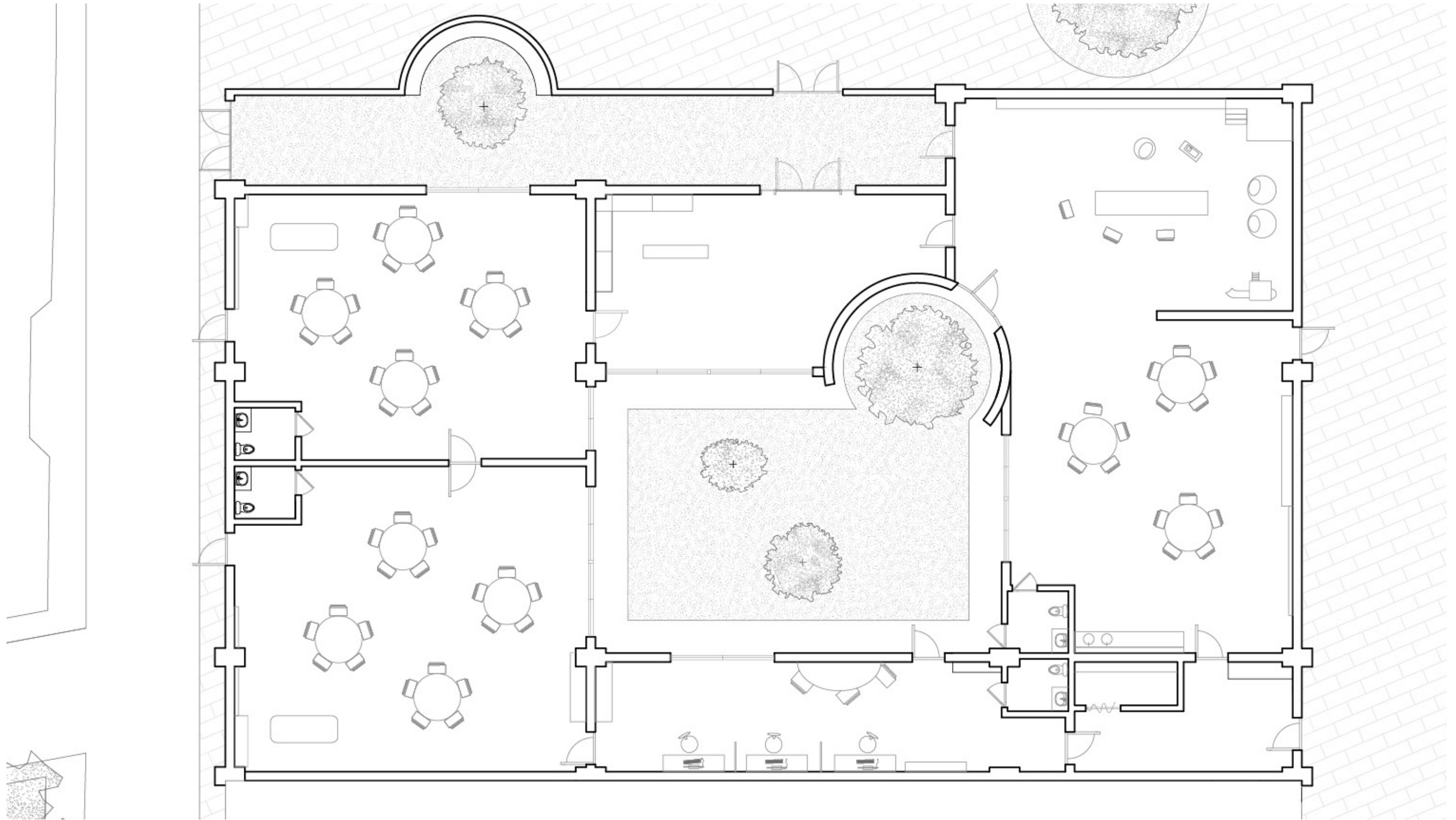


Ground Floor Plan



First Floor Plan





Kindergarten Floor Plan





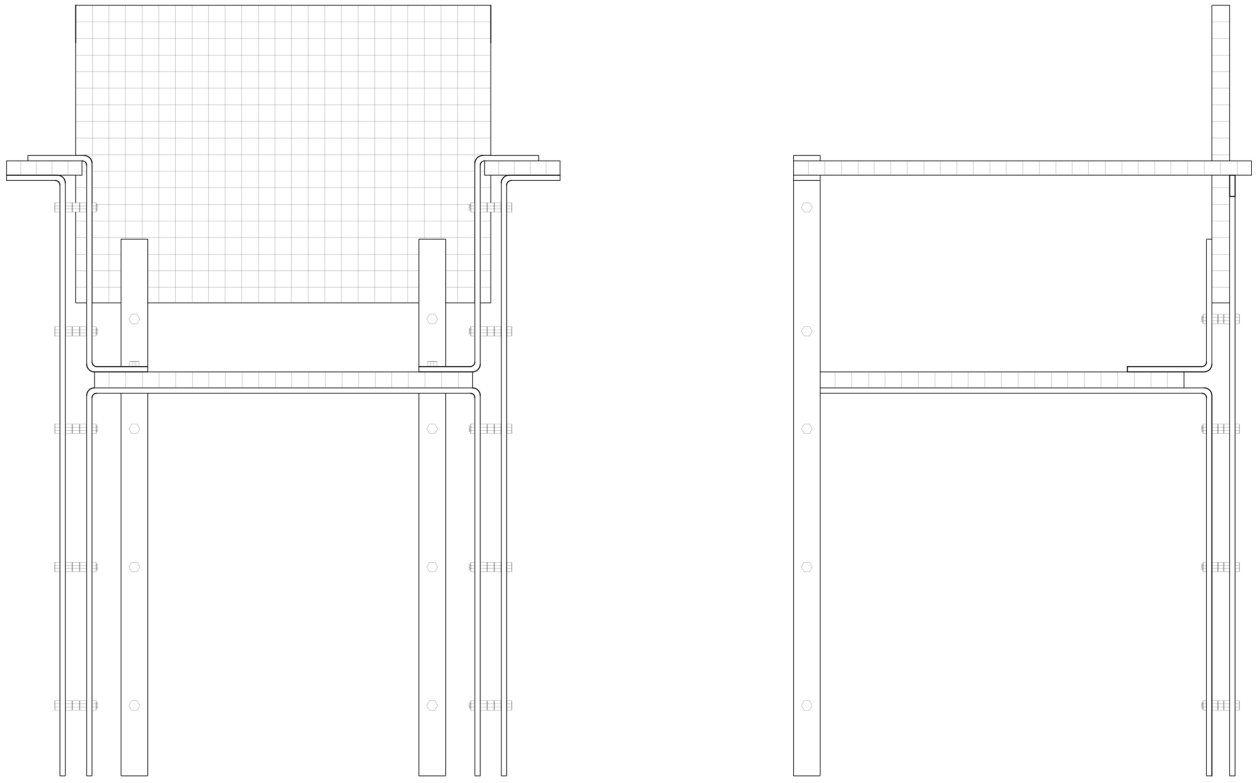


Chair 55

Vellum Furniture Competition Entry - San Luis Obispo, California
October, 2025

Stainless Steel Frame
Panels composed of White Maple, Padauk, and Purple Heart

While exploring the applications of textiles in our built environment, this chair was conceived to demonstrate the power of designing for versatility. Rather than producing a piece of furniture with one specific role and identity, a framework is provided allowing for many different identities over time. Removable wooden panels are suspended in place by steel members and offer an opportunity to add different panels and specify new identities. This is done to draw similarities between our clothing and our architecture as nothing more than enclosures at different scales. By designing for increased user agency and learning from our construction of clothing, a more meaningful relationship can be developed with our spaces.







Sunnyside Agricultural Center

5384 E Kings Canyon Road Fresno, California 93711, United States

Educational Facility

June - July of 2025

This project was a proposal for an agricultural school for Fresno Unified School District. It would serve as a satellite campus where kids could choose to learn about developing and maintaining essential crops found in the central valley of California. Prioritizing access to plant life, cast in place concrete walls establish a row of classrooms with fully glazed entries and exits. This not only allows for natural light to illuminate the spaces but emphasizes the importance of learning outdoors and indoors. Concrete, wood, and steel are the only materials used and massing plays off of the traditional spacial requirements of farms in the valley. The classrooms reference barns and lead to a “silo” where lectures can occur.

At the forefront of this project is the idea of learning through hands-on experience. All classrooms have immediate access to a garden area. On the south side of the campus you can find an experimental garden with access to a greenhouse. The roof of the classroom building encompasses the classrooms which in certain areas reveal other cubic masses that protrude beyond the roof overhangs. Through materiality and exposed building services, the spaces introduce themselves as a connected system. With the occupation of students and faculty working to collectively grow and study crops, the Sunnyside Agricultural Center becomes less of a school and more of a dynamic system to support the needs of the students and plant life.

